

Boundary Adjustment School Year 2024-25

**Planning Unit 328.1 from North Stafford HS to Colonial Forge HS
Community Meeting Presentation
December 18, 2023**



Stafford County Public Schools

Inspire | Empower | Excel

Background

- Projections suggest imbalanced enrollment at North Stafford and Colonial Forge HS next year
- **North Stafford HS** is projected to have a **seat deficit**
- Neighboring **Colonial Forge HS** is projected to have **seats available**
- The incoming 9th grade high school population in planning Unit 328.1, **is less than five percent** of the enrollment of each school affected
- Per Policy 1403, an administrative boundary change was used to improve instructional effectiveness and operating efficiency by balancing enrollment between both schools



School Board Policy 1403

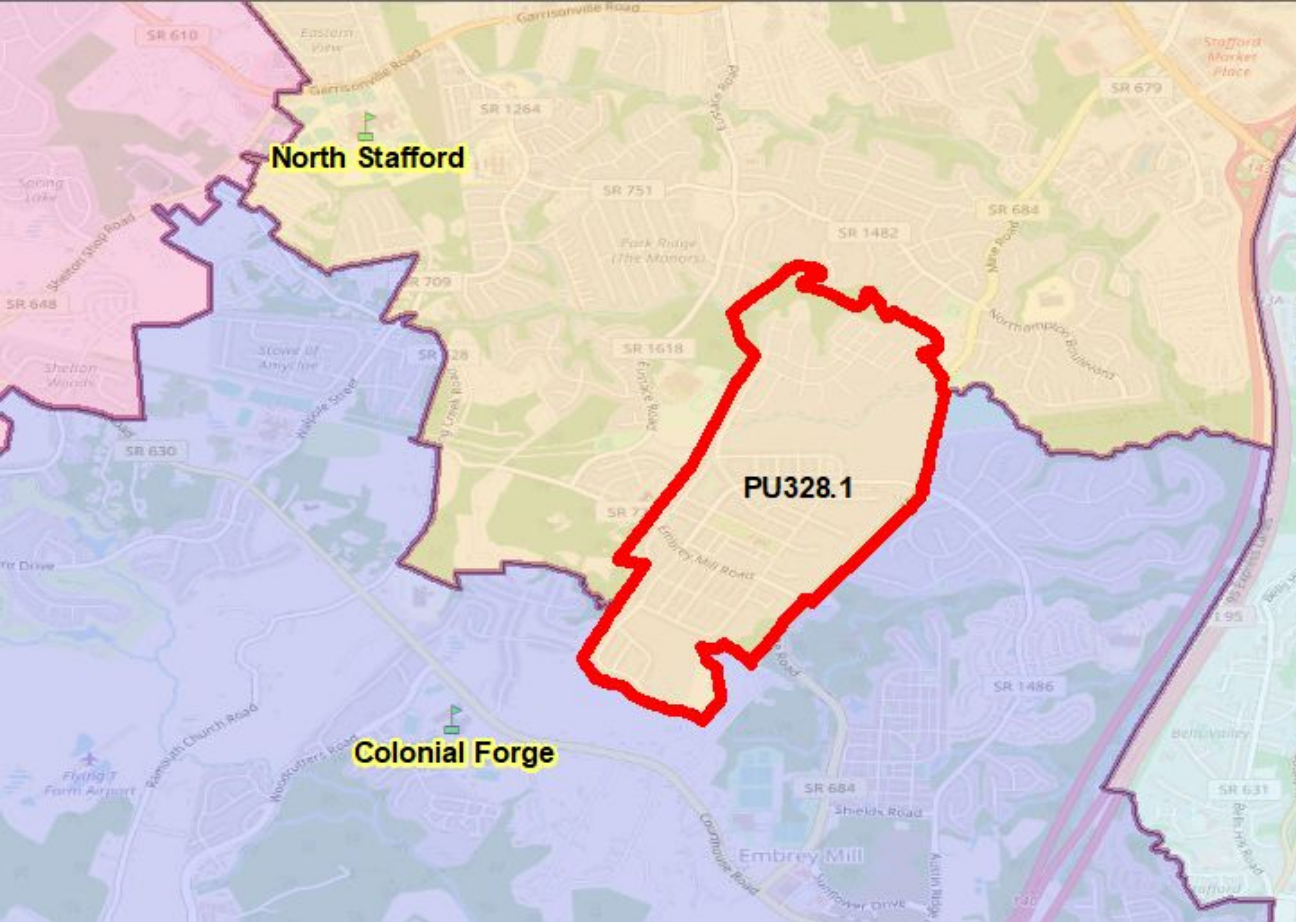
(Excerpt)

Administrative Changes to Attendance Areas

The superintendent is authorized to administratively adjust school attendance areas when:

- An emergency requires such a change, or
- When less than five percent of the enrollment of each school will be affected and analysis indicates the change will improve operating efficiency of the division.





2024 Highlights:

- Reassigns one planning unit from North Stafford HS to Colonial Forge HS
- Rising 9th grade students impacted: 70+/-
- Prevents impacted students from changing schools when High School #6 opens (Aug 2026)



Stafford County Public Schools

Inspire | Empower | Excel

Phased Redistricting Schedule

School Year	Assigned to Colonial Forge	Remain at North Stafford
2024-25	9th only	10th, 11th, and 12th
2025-26	9th and 10th	11th and 12th
2026-27	9th, 10th, and 11th	12th

Note:

Transportation will be provided to all students.



Stafford County Public Schools

Inspire | Empower | Excel

Boundary Adjustment Timeline

- December 1, 2023 - Calls, letters and emails to impacted households
- **December 18, 2023** - Community Meeting at 6:00 PM at Colonial Forge
- **March 1, 2024** - Deadline for older siblings to elect to attend Colonial Forge
- **August 2024** - Boundary Adjustment takes effect



Stafford County Public Schools

Inspire | Empower | Excel

Contact Us:

Lionel White

Director of Facilities, Planning & GIS

Tel: 540-658-6743

Email: planning@staffordschools.net

For more information visit our website:

<https://www.staffordschools.net/redistricting>



Stafford County Public Schools

Inspire | Empower | Excel

Boundary Adjustment School Year 2024-25

**Planning Unit 328.1 from North Stafford HS to Colonial Forge HS
Community Meeting Presentation
December 18, 2023**



Stafford County Public Schools

Inspire | Empower | Excel

Streets Impacted by Boundary Adjustment

Aspen Road	Coriander Lane	Foxglove Way	Larkspur Lane	Smokebush Drive
Basswood Drive	Crab Apple Drive	Gladiola Way	Marigold Street	Snowdrop Drive
Boxelder Drive	Daylily Lane	Hibiscus Drive	Morning Glory Court	Sourwood Court
Coastal Avenue	Embrey Mill Road	Hosta Way	Pepperidge Drive	Spicebush Way
Coneflower Lane	Forsythia Lane	Indigo Way	Petunia Way	Witch Hazel Lane

